

Endocavity Probes



Application: Gynecology, OB
Center frequency: 6.0MHz
Field of View: 135°



Application: Gynecology, OB
Center frequency: 6.0MHz
Field of View: 200°



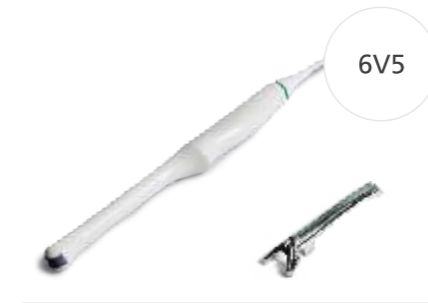
Application: Gynecology, OB
Center frequency: 6.5MHz
Field of View: 180°



Application: Gynecology, OB
Center frequency: 6.0MHz
Field of View: 200°



Application: Urology
Center frequency: 6.5MHz
Field of View: 145°



Application: Gynecology, OB
Center frequency: 6.5MHz
Field of View: 145°

Micro Convex Probes



Application: Urology
Center frequency: 6.0MHz
Field of View: 150°



Application: Abdomen, Cardiac, Urology
Center frequency: 3.5MHz
Field of View: 83°



Application: Abdominal Puncture, Urology
Center frequency: 3.5MHz
Field of View: 70°



Application: Abdomen, Cardiac, Urology, Pediatrics
Center frequency: 6.0MHz
Field of View: 135°



Application: Abdomen, Cardiac, Urology, Pediatrics
Center frequency: 6.5MHz
Field of View: 96°



Application: Abdomen, Cardiac, Urology, Pediatrics
Center frequency: 6.5MHz
Field of View: 135°

Company Profile

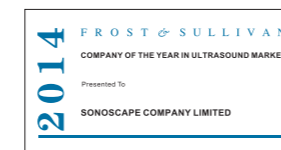
Since its establishment, SonoScape has been committed to providing high quality medical equipment for the healthcare sector. SonoScape specializes in the development and production of diagnostic ultrasound solutions. By introducing advanced imaging techniques, SonoScape has improved diagnostic accuracy and therefore enabled better health outcomes. Since 2002, SonoScape has reached and benefited millions of people. With the world in mind, SonoScape will continue providing more effective and accessible healthcare solutions, through persistent innovation and passion for life.

Quote from the Analyst of FROST & SULLIVAN

"The Frost & Sullivan Award for Growth Leadership is presented to the company that has demonstrated excellence in capturing the highest annual compound growth rate for the last 3 years...The sales of ultrasound devices contribute an overwhelming proportion of total revenue, helping the company strengthen its leading position to outperform the competitors in the marketplace. With increasing penetration of mid-to high-end ultrasound devices, SonoScape is expected to see significant growth potential in the future..."

Company Milestone

- 2002: Company Founded in Shenzhen, China
- 2003: Released SSI-1000: the 1st 15" Portable Color Doppler system in China
- 2004: Released SSI-2000: the 1st PC platform Color Doppler system in China
- 2005: Received the "High Technology Company" award from the PRC government
- 2007: Received "CHINA TOP BRAND" award in the Medical Equipment Industry
- 2007: Released the 1st Real time 4D ultrasound system in China
- 2008: Received "European Entrepreneurial Company 2008" award from FROST & SULLIVAN
- 2008: Received "Flagship Company" award in the Medical Equipment Industry in China
- 2009: Received "Product Quality Leadership Award 2009" from FROST & SULLIVAN
- 2011: Received the Reddot 2011 Product Design Award for S20 in Essen, Germany
- 2013: Received "Ultrasound Market Growth Leadership Award, 2013" from FROST & SULLIVAN
- 2014: Received the iF Product Design Award 2014 for S9 in Munich, Germany
- 2014: Received "Company of the Year in Ultrasound Market, 2014" from FROST & SULLIVAN



ISO 13485

CE 0197

SonoScape

Yizhe Building, Yuquan Road, Shenzhen, 518051, China

Tel: 86-755-26722890 Fax: 86-755-26722850

E-mail:sonoscape@sonoscape.net www.sonoscape.com

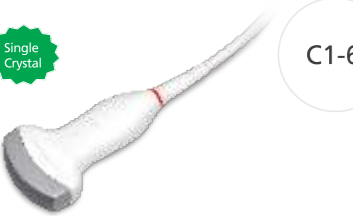
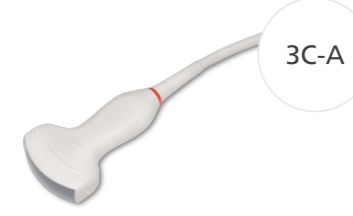







SonoScape

A Wide Range of Advanced Probe

Volume Probes

 <p>VC6-2</p> <p>Application: Abdomen, OB, Gynecology Center frequency: 3.75MHz Field of View: 75°</p>	 <p>VE9-5</p> <p>Application: Gynecology Center frequency: 6.0MHz Field of View: 145°</p>	 <p>VL12-5</p> <p>New</p> <p>Application: Small part, Breast, Vascular Center frequency: 8.0MHz Field of View: 38mm</p>
--	---	---

Convex Probes

 <p>C1-6</p> <p>Single Crystal</p> <p>Application: Abdomen, OB, Gynecology, Urology Center frequency: 3.2MHz Field of View: 70°</p>	 <p>3C-A</p> <p>Application: Abdomen, OB, Gynecology, Urology Center frequency: 3.2MHz Field of View: 50°</p>	 <p>C344</p> <p>Application: Abdomen, OB, Gynecology, Urology Center frequency: 3.5MHz Field of View: 70°</p>
 <p>C354</p> <p>Application: Abdomen, OB, Gynecology, Urology Center frequency: 3.5MHz Field of View: 70°</p>	 <p>C362</p> <p>Application: Abdomen, OB, Gynecology, Urology Center frequency: 3.5MHz Field of View: 70°</p>	 <p>C351</p> <p>Application: Abdomen, OB, Gynecology, Urology Center frequency: 3.5MHz Field of View: 86°</p>
 <p>C352</p> <p>Application: Abdomen, OB, Gynecology, Urology Center frequency: 3.5MHz Field of View: 70°</p>	 <p>C353</p> <p>Application: Abdomen, OB, Gynecology, Urology Center frequency: 3.5MHz Field of View: 70°</p>	 <p>C542</p> <p>Application: Abdomen, OB, Gynecology, Urology, Pediatrics Center frequency: 5.0MHz Field of View: 60°</p>


Convex Probes

 <p>C543</p> <p>Application: Abdomen, OB, Gynecology, Urology, Pediatrics Center frequency: 5.0MHz Field of View: 83°</p>	 <p>L741</p> <p>Application: Musculoskeletal, Small Parts, Nerve, Vascular Center frequency: 7.5MHz Field of View: 46mm</p>	 <p>L742</p> <p>Application: Musculoskeletal, Small Parts, Nerve, Vascular Center frequency: 8.0MHz Field of View: 38mm</p>
 <p>L743</p> <p>Application: Musculoskeletal, Small Parts, Nerve, Vascular Center frequency: 7.5MHz Field of View: 48mm</p>	 <p>10I2</p> <p>Special</p> <p>Application: Musculoskeletal, Small Parts, Nerve, Vascular, Surgery Center frequency: 7.5MHz Field of view: 25mm</p>	 <p>L752</p> <p>Application: Musculoskeletal, Small Parts, Nerve, Vascular Center frequency: 8.0MHz Field of View: 52mm</p>
 <p>10L1</p> <p>Application: Musculoskeletal, Small Parts, Nerve, Vascular Center frequency: 8.5MHz Field of View: 36mm</p>	 <p>L745</p> <p>Application: Musculoskeletal, Small Parts, Nerve, Vascular Center frequency: 7.5MHz Field of view: 46mm</p>	 <p>L746</p> <p>Application: Musculoskeletal, Small Parts, Nerve, Vascular Center frequency: 7.5MHz Field of view: 50mm</p>

Phased Array Probes

 <p>S1-5</p> <p>Single Crystal</p> <p>Application: Cardiac, Transcranial, Abdomen Center frequency: 2.7MHz Field of View: 90°</p>	 <p>2P1</p> <p>Application: Cardiac, Transcranial, Abdomen Center frequency: 2.5MHz Field of View: 90°</p>	 <p>3P1</p> <p>Application: Cardiac, Transcranial, Abdomen Center frequency: 2.7MHz Field of View: 90°</p>
 <p>P5-1</p> <p>Application: Cardiac, Transcranial, Abdomen Center frequency: 2.7MHz Field of View: 90°</p>	 <p>4P-A</p> <p>Application: Cardiac, Transcranial, Abdomen Center frequency: 2.7MHz Field of View: 90°</p>	 <p>5P1</p> <p>Application: Pediatric cardiac Center frequency: 5.0MHz Field of View: 90°</p>

Phased Array Probes

 <p>5P2</p> <p>Application: Pediatric cardiac Center frequency: 5.0MHz Field of View: 90°</p>	 <p>8P1</p> <p>Application: Pediatric cardiac Center frequency: 7.5MHz Field of View: 90°</p>	 <p>PWD 2.0</p> <p>Application: Transcranial Center frequency: 2.0MHz</p>
---	---	---

CW Pencil Type Probes

 <p>CWD 2.0</p> <p>Application: Cardiac Center frequency: 2.0MHz</p>	 <p>CWD 4.0</p> <p>Application: Cardiac Center frequency: 4.0MHz</p>	 <p>CWD 5.0</p> <p>Application: Cardiac, Pediatrics Center frequency: 5.0MHz</p>
--	--	--

TEE Probes

 <p>MPTEE</p> <p>Application: Cardiac Center frequency: 5.0MHz Field of View: 90°</p>	 <p>MPTEE mini</p> <p>Application: Pediatric Cardiac Center frequency: 5.0MHz Field of View: 90°</p>	 <p>LAP7</p> <p>Application: Surgery Center frequency: 7.0MHz Field of view: 40mm</p>
--	---	--

Bi-plane Probes

 <p>BCL10-5</p> <p>Application: Urology Center frequency: 6.5/7.5MHz Field of View: 200°/60mm</p>	 <p>BCC9-5</p> <p>Application: Urology Center frequency: 6.5MHz Field of View: 150°</p>	 <p>BCC9-4</p> <p>Application: Urology Center frequency: 6.5MHz Field of View: 150°</p>
---	---	---