

**CHISON**  
Value Beyond Imaging



# **SonoBook™ 6 VET**

Advanced capabilities within laptop design





## CHISON **SonoBook<sup>TM</sup> 6 VET**

- ✓ Featured with compact laptop based design for easy mobility, providing the best solutions for various challenging VET environment.
- ✓ Combined with dedicated VET transducers, professional VET software, specialized VET accessories and quick reaction, SonoBook 6 VET is well-suited for both small animal and large animal.





- ✓ 15 inch HD LED monitor with 120° rotatable.
- ✓ Compact and robust laptop design with 5.5kg for challenging VET environment and easy mobility.
- ✓ 2hrs battery life in active mode for outdoor VET scanning.
- ✓ Dedicated trolley with small footprint: anti-theft lock, accessory basket, printer socket, pneumatic height adjustment, sonotriple connector, ergonomic hand rest.
- ✓ Complete accessories for VET application: PC printers and video printers, dedicated carrying case, waterproof keyboard cover.



# Designed for the Veterinarian

## Dedicated VET transducers

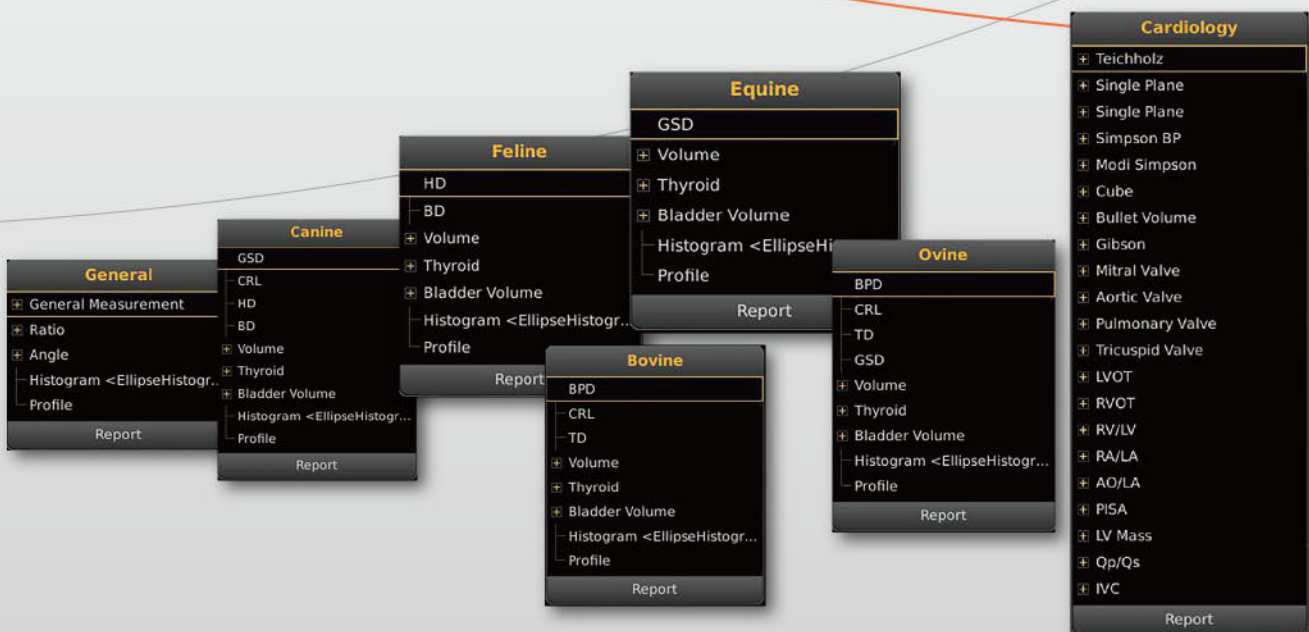
- Smaller footprint , easy to target whole body
  - Ergonomic design, release from scanning fatigue
  - Higher frequency, obtain near field image
  - Lower weight, easy to carry, easy to scan
- 
- High frequency linear probe with good resolution and penetration
  - Frequency range: 7.0MHz-18.0MHz
  - Excellent choice for superficial scanning: tendon, testicle, intestine
- 
- Dedicated linear-rectal probe for large animal's reproduction
  - Black color for durable usage, easy to clean
  - Ultra-long cable to keep the system for the safe distance



## Professional VET software

*specialized VET preset*

## Dedicated VET calculation package, body mark and annotation

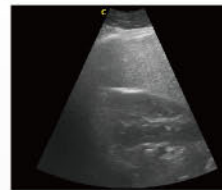


# Excellent image quality



## FHI for deep penetration of large animal .

- FHI is an innovative harmonic imaging technology that uses multiple transmission and receiving methods based on the patient's size and weight.
- This allows the SonoBook 6 VET to maintain image resolution when imaging larger patients.
- Traditional Tissue Harmonics and Phased Harmonics compromise image resolution when penetration is increased.
- Chison's FHI technology greatly improves diagnostic abilities and clinical confidence in larger, difficult-to-image patients.



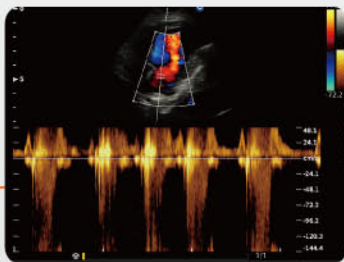
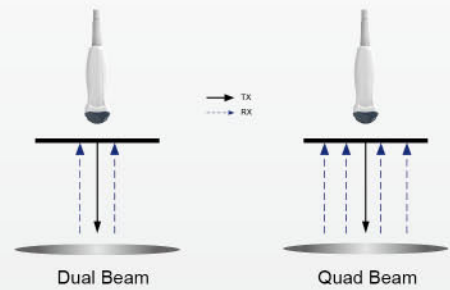
OFF



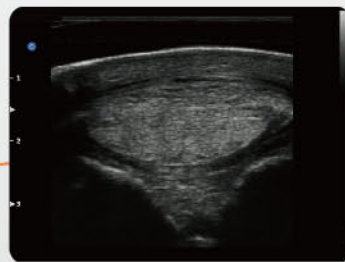
ON

## Q-beam for rapid breath of small animal.

- Compared to the traditional dual-beam, SonoBook 6 VET uses quad-beam to receive signal, thus doubles the volume of signal received as well as the frame rate.
- Higher frame rate ensures better diagnostic confidence and efficiency. Especially for rapid movement of small animals.



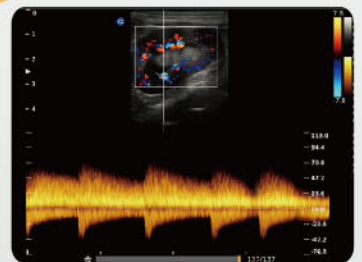
Canine Cardiac, PW Mode



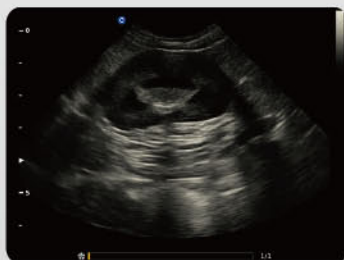
Equine Tendon, B Mode



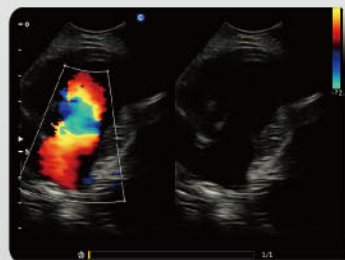
Canine Kidney, B/BC Mode



Canine Kidney, PW Mode



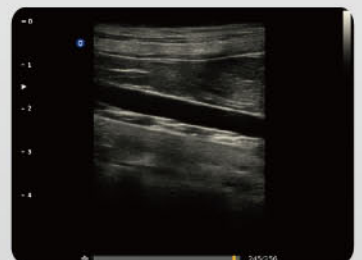
Canine Kidney, B Mode



Canine Cardiac, B/BC Mode



Canine Abdomen Vessel, PW Mode



Canine Abdomen Vessel, B Mode



2.0MHz-6.8MHz Convex  
C3-V



4.0MHz-15.0MHz Linear  
L7-V



7.0MHz-18.0MHz ( With FHI ) Linear  
L12-V



5.0MHz-14.0MHz Linear  
L8M5-V



1.5MHz-5.3MHz Phased array  
P2-V



4.0MHz-15.0MHz Trans-Rectal  
R7-V



2.0MHz-6.8MHz Micro-Convex  
MC3-V



4.0MHz-12.0MHz Micro-Convex  
MC6-V



4.0MHz-15.0MHz Linear Rectal  
L7V-V

## CHISON Medical Technologies Co., Ltd.

### Sales & Service Contact Address:

No.9, Xinhuihuan Road, Xinwu District, Wuxi, Jiangsu, China 214028

**TEL :** 0086-510-85310593 / 85310937

**FAX :** 0086-510-85310726

**EMAIL :** export@chison.com.cn

